



Frankfort, Kentucky



Kentucky State University



Main Campus

← US 60 →

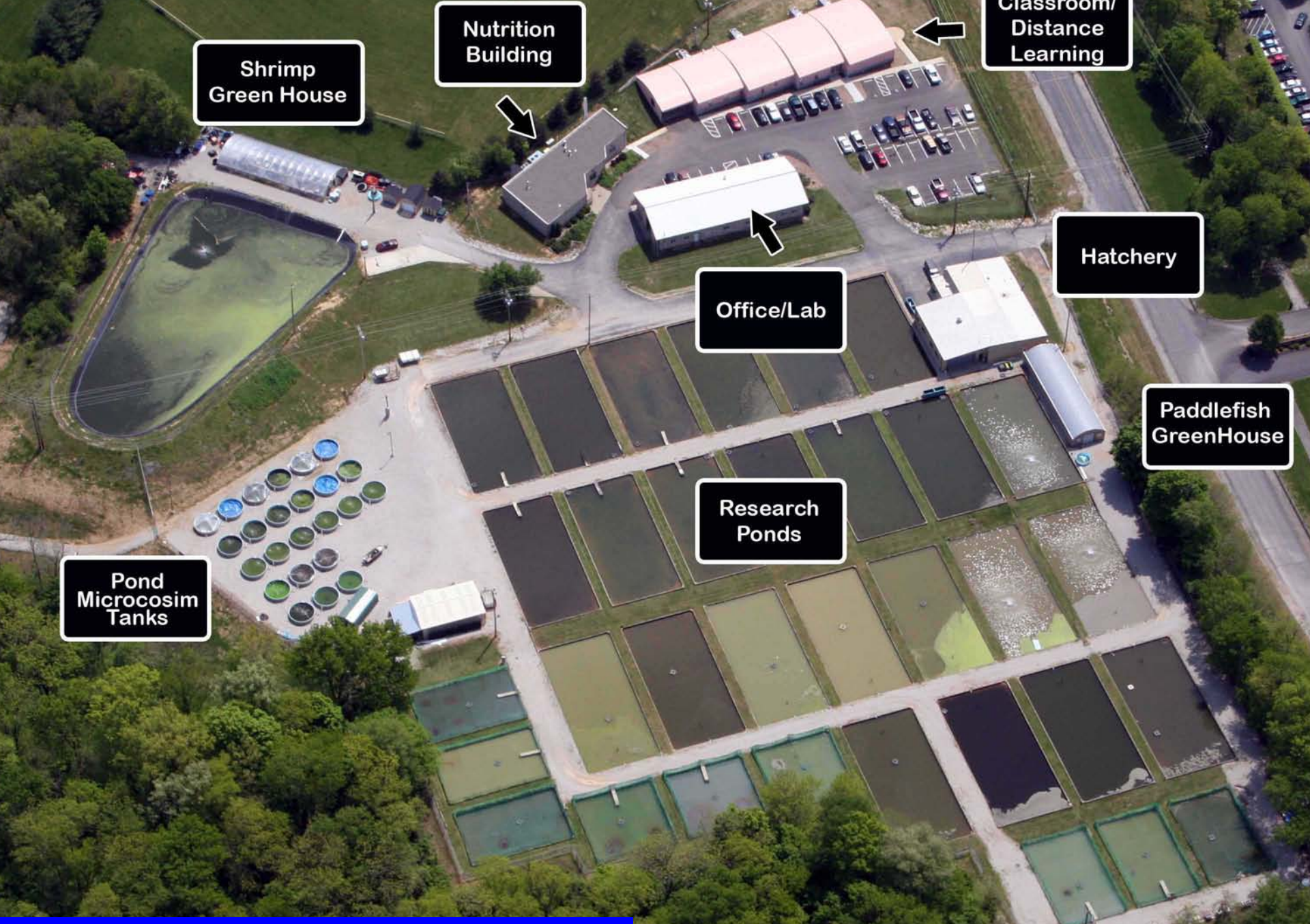
**Aquaculture
Research
Center**

Alumni Drive

676 East/West Connector

King Blvd.





Shrimp Green House

Nutrition Building

Classroom/ Distance Learning

Hatchery

Office/Lab

Paddlefish GreenHouse

Research Ponds

Pond Microcosim Tanks

Aquaculture Research Center

OVERVIEW OF REPRODUCTIVE BIOLOGICAL STUDIES ON PADDLEFISH BETWEEN UNIVERSITY OF SOUTH BOHEMIA RESEARCH INSTITUTE AND KENTUCKY STATE UNIVERSITY



Steven D. Mims

steven.mims@kysu.edu



Paddlefish

Key Aquaculture Characteristics:

- Native to United States
- Related to sturgeon
- Filter-filter
- Reproducible
- Fast growing
- Boneless meat
- Caviar



Value-added Meat Products



Paddlefish Caviar-Captured Fishery

Paddlefish caviar is highly sought after and fetches high prices (>\$600/kg).



International Team Work



**USDA
Grants
of over
One
Million
Dollars**

Sperm Research

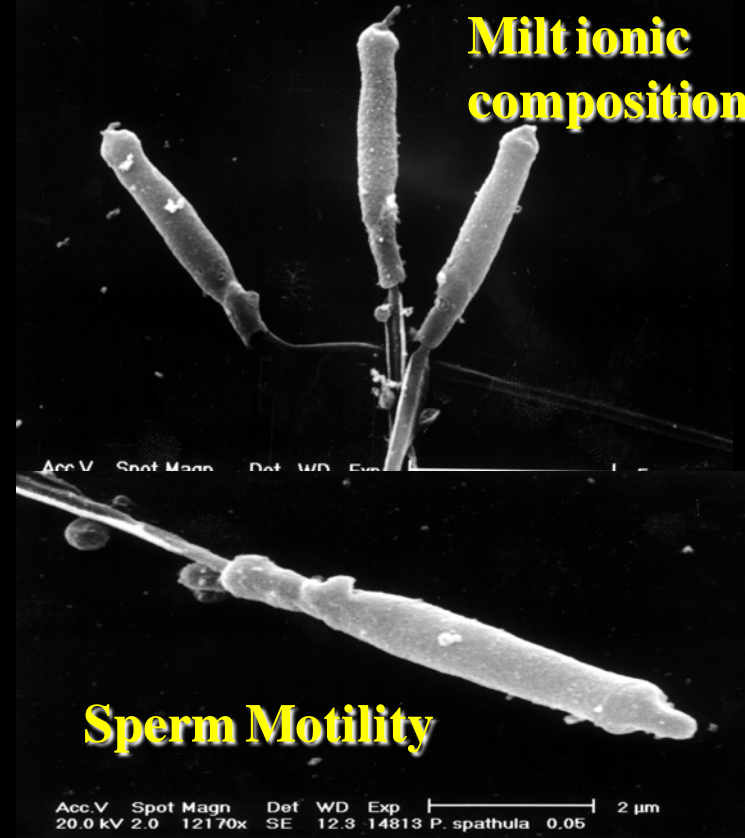
Quantity of milt



Cryopreservation



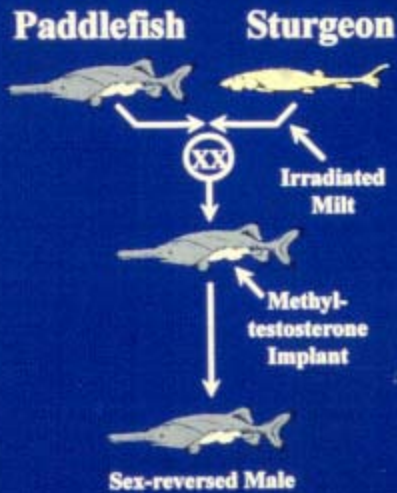
Milt ionic composition



Sperm Motility

Direct Gynogenesis

I. BROODSTOCK-GYNOGENESIS



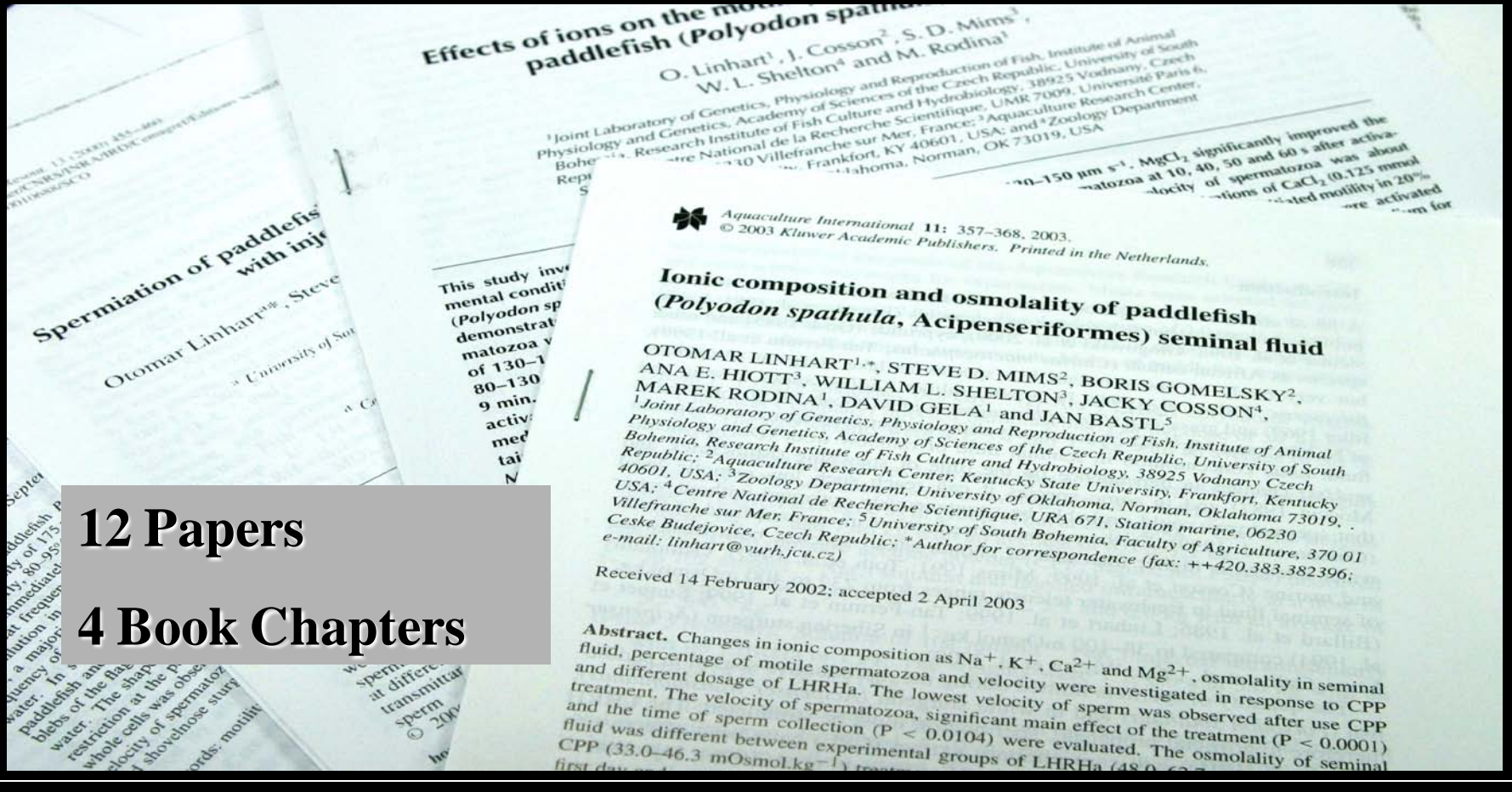
II. BROODSTOCK-BREEDING



Survival and Yields

- 79% female, 17% males and 4% N.D.-induced gynogenesis (83% ♀ and 20% ♂)
- 60% of the females (8 yrs. old) had roe
- Total length 140 cm (110 to 150 cm)
- Weight 15 kg (7 to 21 kg)

Published Papers and Book Chapters



12 Papers

4 Book Chapters

Graduate Student Exchange



What is caviar?

